

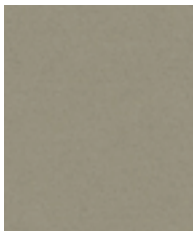
Fairfield
CUZ47



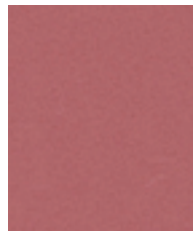
Wesley
CUZ82



Dunhurst
CUZ58



Durham
CUZ14



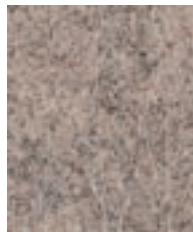
Dollar
CUZ84



Butterstone
CUZ83



Keil
CUZ85



St Andrews
CUZ86



Aberdeen
CUZ87



Starley
CUZ88



Goldsmith
CUZ39



Trevelyan
CUZ31



Rockport
CUZ89



Edge Hill
CUZ90



Oriel
CUZ18



Kingsmead
CUZ67



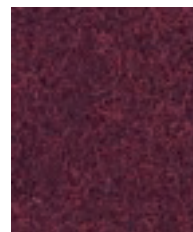
Magdalene
CUZ21



Handcross
CUZ63



City
CUZ1A



Imperial
CUZ1B



Wellington
CUZ13



Kimbolton
CUZ66

The sample swatches shown are indications only and may vary from the original source. For exact references please request a swatch card. To order samples please contact: 01293 510553 or visit www.wave-office.co.uk



Ulster
CUZ1F



Bath
CUZ1D



Silverdale
CUZ28



Lancaster
CUZ1C



Latymer
CUZ33



Surrey
CUZ1E



Newport
CUZ1L



Aberlour
CUZ1J



Bryanston
CUZ53



Aston
CUZ02



Salford
CUZ1G



Camphill
CUZ1K



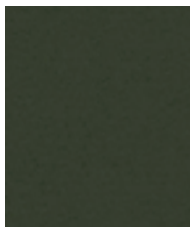
Belhaven
CUZ1H



Knightsbridge
CUZ26



Silcoates
CUZ30



Glasgow
CUZ1M



Cardiff
CUZ1N



Hull
CUZ1P

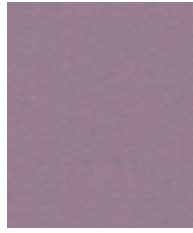


Winchester
CUZ12

The sample swatches shown are indications only and may vary from the original source. For exact references please request a swatch card. To order samples please contact: 01293 510553 or visit www.wave-office.co.uk



Brighton
CUZ1Q



Sheffield
CUZ1T



Nottingham
CUZ1S



Plymouth
CUZ1R



Manchester
CUZ1V



Newcastle
CUZ1W



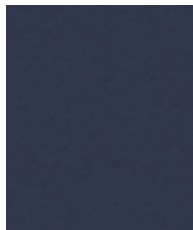
St Martins
CUZ1X



Sussex
CUZ1U



Balliol
CUZ24



Edinburgh
CUZ1Y



Exeter
CUZ1Z



Oxford
CUZ09



Collingwood
CUZ27



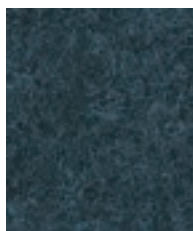
Loughborough
CUZ2A



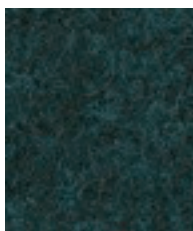
Eastbourne
CUZ46



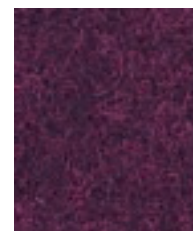
Napier
CUZ08



Glenalmond
CUZ62



Bromsgrove
CUZ35



Banbridge
CUZ32

The sample swatches shown are indications only and may vary from the original source. For exact references please request a swatch card. To order samples please contact: 01293 510553 or visit www.wave-office.co.uk

Product information

Blazer is a pure new wool upholstery fabric with a billiard cloth felted finish. Created from 100% Laneve branded wool, its origin can be traced back to the individual sheep farms on South Island, New Zealand. Laneve promises wool integrity and complete chain of custody.

Blazer is certified to the EU Ecolabel.



Contact

UK Head Office:	+44 (0)1924 490491
Germany:	+49 7031 60 84 30
Scandinavia:	+45 32 55 20 01
France/Benelux:	+32 56 227 266
USA:	+1 317 484 0305
China:	+ 86 (0) 21 6133 1812

www.camirafabrics.com



Technical information

UK

Composition

100% Virgin Wool.
Non metallic dyestuffs

Environmental

Rapidly renewable and compostable

Width

140cm minimum

Weight

460g/m² ±5% (645g/lin.m ±5%)

*Abrasion Resistance

5 year guarantee / 50,000 Martindale cycles (full details available)

Flammability

BS EN 1021 - 1:2006 (cigarette)
BS EN 1021 - 2:2006 (match)
BS 7176:2007 Low Hazard
Optional: Please specify when ordering:
BS 5852:2006 Section 4 Ignition Source 5
BS 7176:2007 Medium Hazard
Note: Flammability performance is dependent on foam used.

*Light Fastness

5 (ISO 105 - B02:2013)

*Fastness to Rubbing

Wet: 4, Dry: 4 (ISO 105 - X12:2002)

Cleaning

Vacuum regularly. Professionally dry clean or wipe clean with a damp cloth.

* Tested in accordance with BS EN 14465. Please note that seam performance is dependent on seam construction and needle and thread type. We recommend that appropriate sewing advice be taken.

Note: Batch to batch variations in shade may occur within commercial tolerances. We reserve the right to alter technical specifications without notice. The Unregistered Design Rights and the Copyright in all designs are the exclusive property of Camira Fabrics Limited.

D

Zusammensetzung

100% Schurwolle.
Nicht schwermetallhaltige Farbstoffe

Umweltfreundlich

Schnell erneuerbar und kompostierbar

Breite

140cm nutzbare Breite

Gewicht

460g/m² ±5% (645g/lfd.M ±5%)

*Scheuerfestigkeit

5 Jahre Garantie / 50,000 Martindale Scheuertouren (Details auf Anfrage)

Feuersicherung

BS EN 1021 - 1:2006 (Zigarettestest)
BS EN 1021 - 2:2006 (Sreichholztest)
BS 7176:2007 Low Hazard
Bitte bei Auftragserteilung angeben:
BS 5852:2006 Section 4 Ignition Source 5
BS 7176:2007 Medium Hazard
Bemerkung: Schwerentflammbarkeit hängt von verwendetem Schaum ab

*Lichtechtheit

5 (ISO 105 - B02:2013)

*Reibechtheit

Nass: 4, Trocken: 4 (ISO 105 - X12:2002)

Reinigung

Regelmässig absaugen. Professionelle Trockenreinigung. Alternativ dazu mit einem feuchten Tuch abwischen.

* Wurde nach BS EN 14465 getestet. Eine optimale Nahtausreissfestigkeit hängt von der Nahtfahne, der verwendeten Nadel und dem Näh-Garn ab. Wir empfehlen daher Nähversuche durchzuführen.

Wichtig: Handelsübliche Farbabweichungen können auftreten und berechtigen nicht zur Reklamation. Wir behalten uns die Änderung technischer Spezifikationen vor. Die registrierten und nicht registrierten Urheberrechte der Dessinierungen sind ausschliessliches Eigentum der Camira Fabrics Limited.

F

Composition

100% Laine Vierge.
Teintures non métalliques

Écologique

Rapidement renouvelable et compostable

Largeur

140cm minimum

Poids

460g/m² ±5% (645g/m.l ±5%)

*Résistance à l'abrasion

Garantie de 5 ans / 50,000 Martindale tours (renseignements complémentaires disponibles)

Flammabilité

BS EN 1021 - 1:2006 (cigarette)
BS EN 1021 - 2:2006 (allumette)
BS 7176:2007 Low Hazard
Prière de le mentionner lors de la commande:
BS 5852:2006 Section 4 Ignition Source 5
BS 7176:2007 Medium Hazard
Notez: Réaction au feu dépend de la mousse utilisée.

*Solidité à la lumière

5 (ISO 105 - B02:2013)

*Solidité au Frottement

Mouillé: 4, Sec: 4 (ISO 105 - X12:2002)

Nettoyage

Aspirer régulièrement. Nettoyage à sec professionnel. Autrement, essuyer avec un tissu humide.

* Testé selon la norme BS EN 14465. Veuillez noter que la performance du joint dépend de sa construction ainsi que de l'aiguille et du type de fil utilisés.

Remarque: une variation de couleurs peut provenir (commerciallement tolérable). Nous réservons le droit de changer les spécifications techniques sans préavis. Les Droits de Conception non-enregistrés et les droits d'auteur de tous les motifs sont la propriétés exclusives de Camira Fabrics Limited.

ES

Composición

100% Lana Virgen.
Tintes no metálicos

Ambiental

Rapidamente renovable y compostable

Ancho

140cm mínimo

Peso

460g/m² ±5% (645g/lin.m ±5%)

*Resistencia a la abrasión

Garantía de uso 5 años / 50,000 Martindale ciclos (más información disponible bajo consulta)

Inflamabilidad

BS EN 1021 - 1:2006 (cigarillo)
BS EN 1021 - 2:2006 (cerilla)
BS 7176:2007 Low Hazard
Con tratamiento adicional de foamizado por favor especificar cuando se requiere en el pedido:
BS 5852:2006 Section 4 Ignition Source 5
BS 7176:2007 Medium Hazard
Condiciones ignífugas dependientes del tipo de foam utilizado.

*Solidez a la luz

5 (ISO 105 - B02:2013)

*Solidez al rozamiento

Húmedo: 4, Seco: 4 (ISO 105 - X12:2002)

Limpieza

Limpiar con aspirador con regularidad. Limpiar en seco, o bien lavar con un paño húmedo.

* Probado de acuerdo con la norma BS EN 14465. Tenga en cuenta que el rendimiento de la costura depende de la construcción de la costura, además de la aguja y del tipo de rosca. Le recomendamos que se aconsejen para coser la costura.

Nota: las variaciones de lote a lote en la sombra se puede producir dentro de tolerancias comerciales. Nos reservamos el derecho a efectuar modificaciones técnicas sin previo aviso. Los derechos sobre los diseños no registrados y los derechos de autor en todos los diseños son propiedad exclusiva de Camira Fabrics Limited.